



POUYA

Power_system Online_simulation Unveil Your Analysis

A Real Time Simulator



Examine the behavior of an actual sugar plant

Reference: Author experience

WRITER:

PUBLISHED: 2008

A sugar plant consumes about 16MW power 230, 33, 6.6 kV, 400V

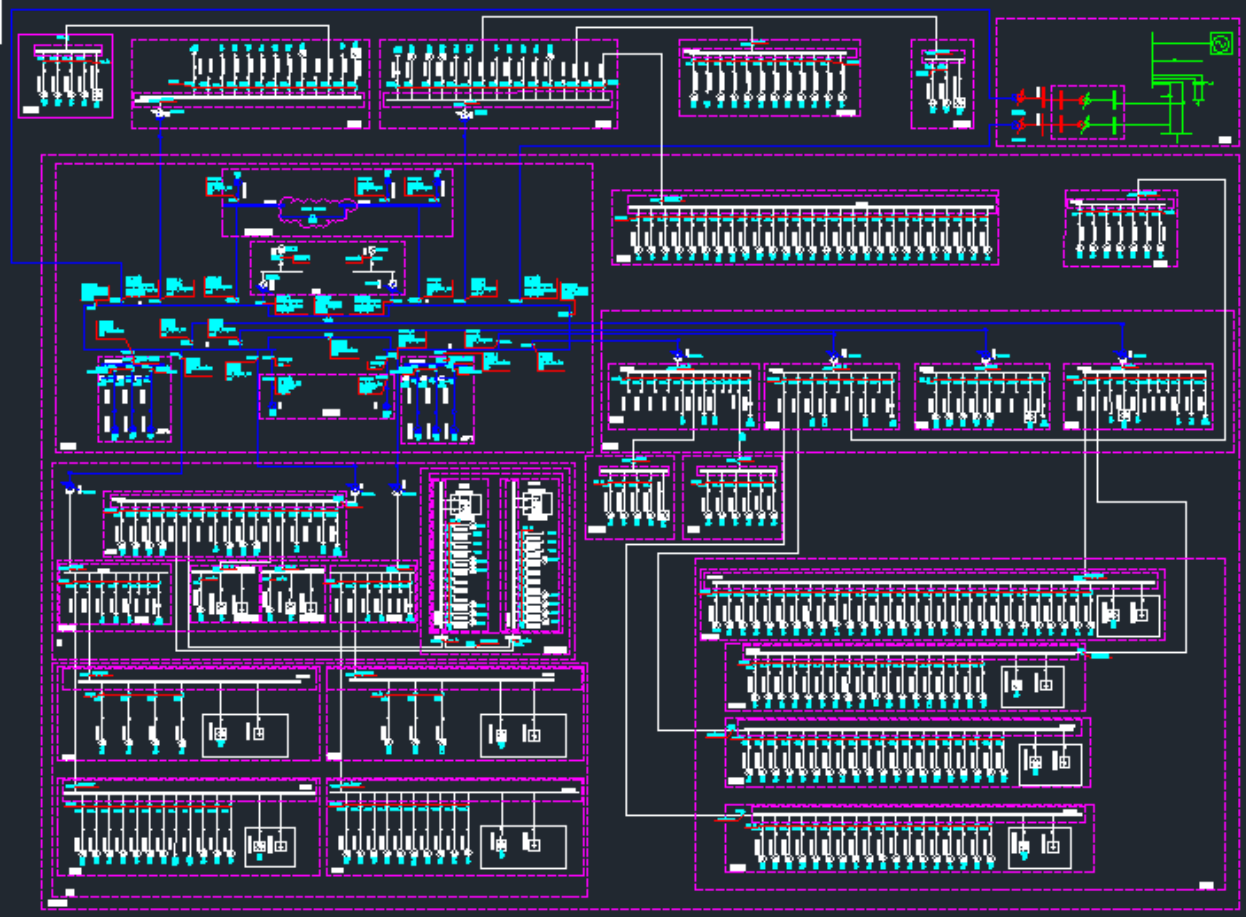
Simulate and find out the behavior of the plant in fault condition

EXERCISES

- 1- Test the behaviour of MCCBs;
- 2- Test the emergency generator behaviour;
- 2- Test motor starting with capacitor banks;
- 3- Test relay coordination in response to fault in the substations;
- 4- Test dirctional relay behaviour;
- 5- Test motor recovery from fault;
- 6- Register for a related class to find out more.



“The software owner retains copyright © to the software manuals”



Some of the substations of the plant

