

# POUYA

**P**ower\_system **O**nline\_simulation **U**nveil **Y**our **A**nalysis

A Real Time Simulator



## **Examine the behavior of an actual oil refinery 120MW consumption**

**Reference:** Author experience

**WRITER:**

**PUBLISHED:** 2007

An oil refinery station that consumes 120MW power with four gas and one steam turbine generators (combined cycle) 230, 63, 20, 11, 6.0, 1 KV, 400V

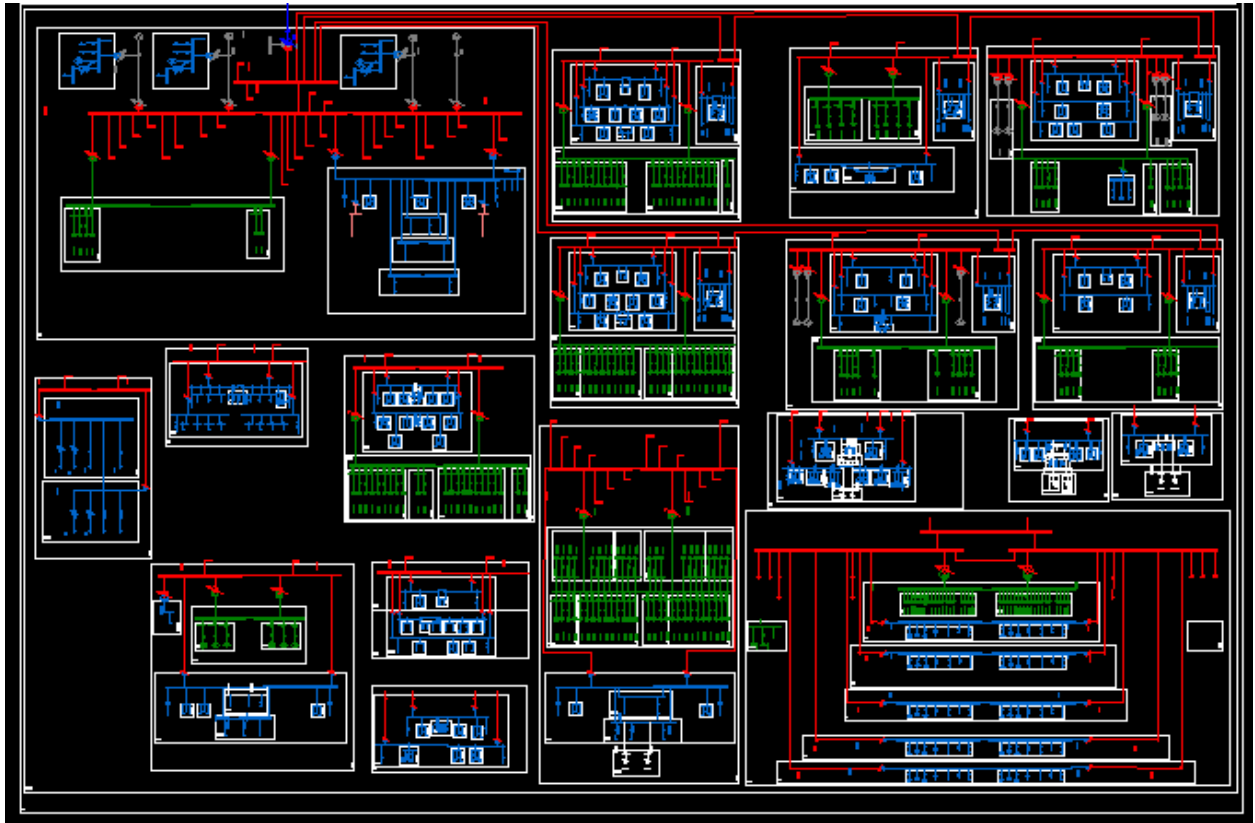
Simulate and find out the difference of the plant before proper relay setting and after POUYA automatic relay settings.

## **EXERCISES**

- 1- Test the behaviour of the network;
- 2- Test the frequency load sheddings;
- 3- Test motor starting;
- 4- Test relay coordination in response to fault in the substations;
- 5- Test bus transfer on the substations that do not have their network in loop condition;
- 6- Test dirctional relay behaviour;
- 7- Register for a related class to find out more.



“The software owner retains copyright © to the software manuals”



A Substation of the refinery plant. The central motor is an equivalent used for some of 400V motors

